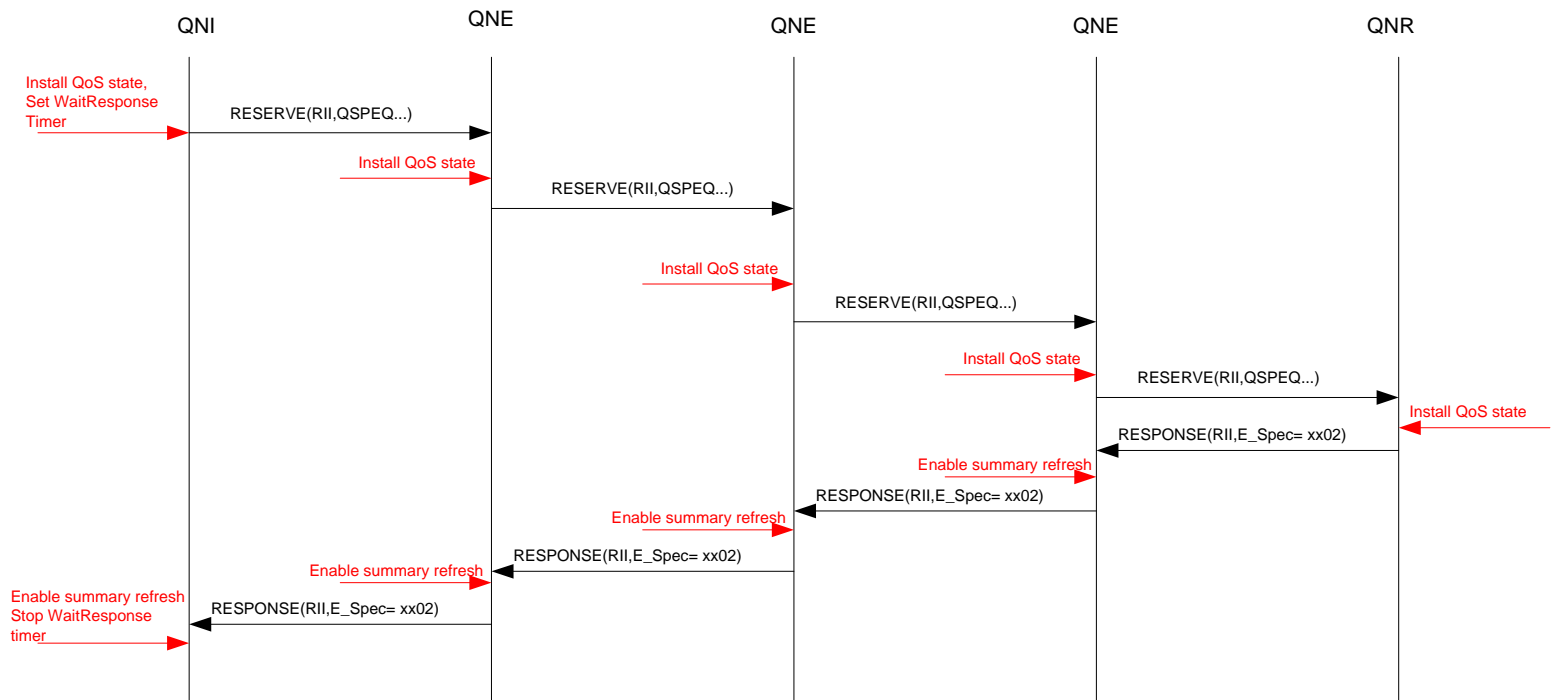
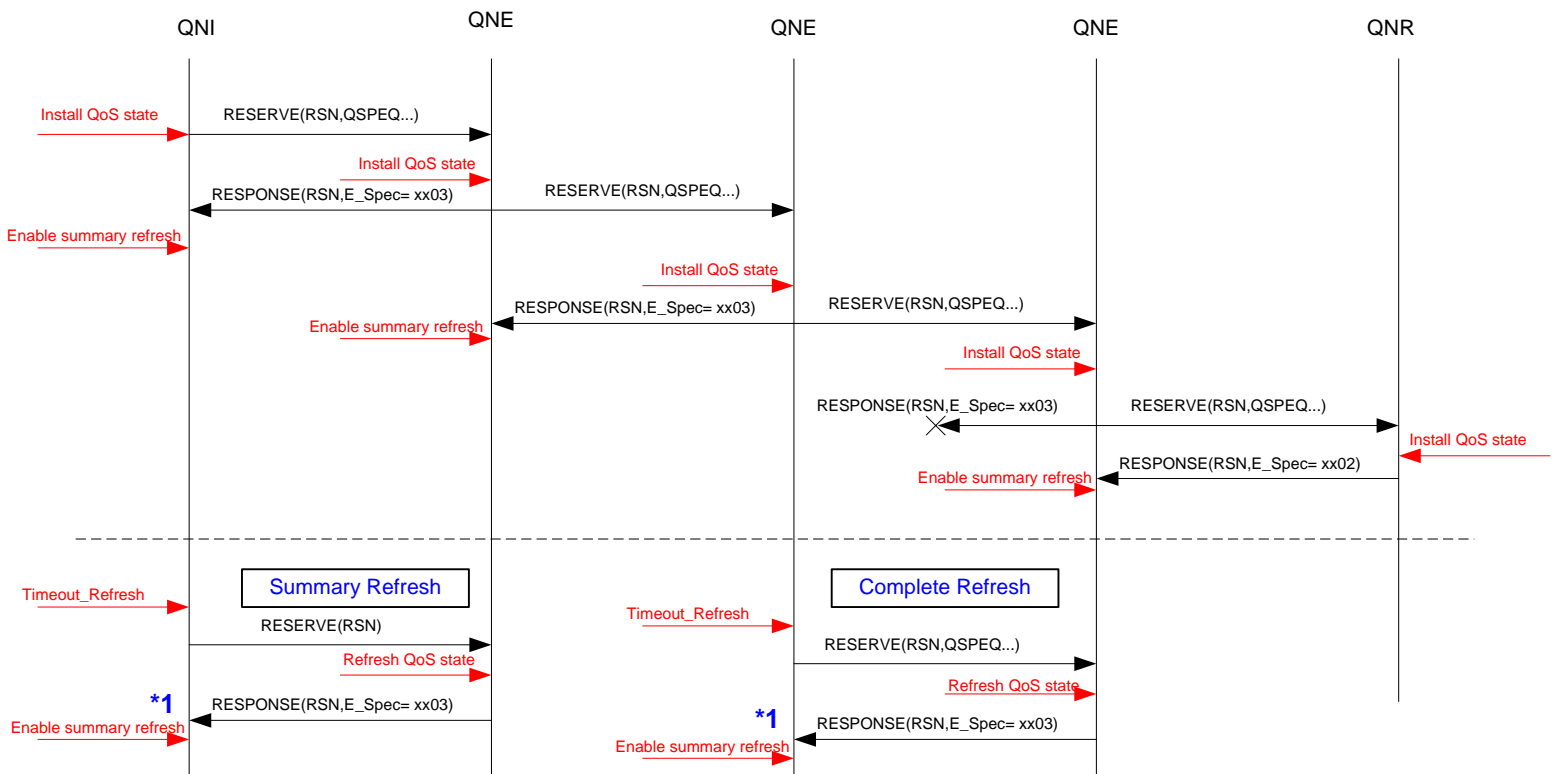


RII included, ACK flag set by default



ACK flag set by default, RII not included



NOTES:

There are 2 timers: **Refresh state timer** and **Wait Response Timer**. With installation of the QoS state in the node, Refresh state timer is set. If RII is sent with the RESERVE message, **Wait Response Timer** is set. It seems reasonable that **Wait Response Timer < Refresh state Timer**.

*1. Receiving of RESPONSE message after sending refresh Reserve message doesn't refresh the QoS state in upstream node. It is open issue if RESPONSE is even sent in this case.?