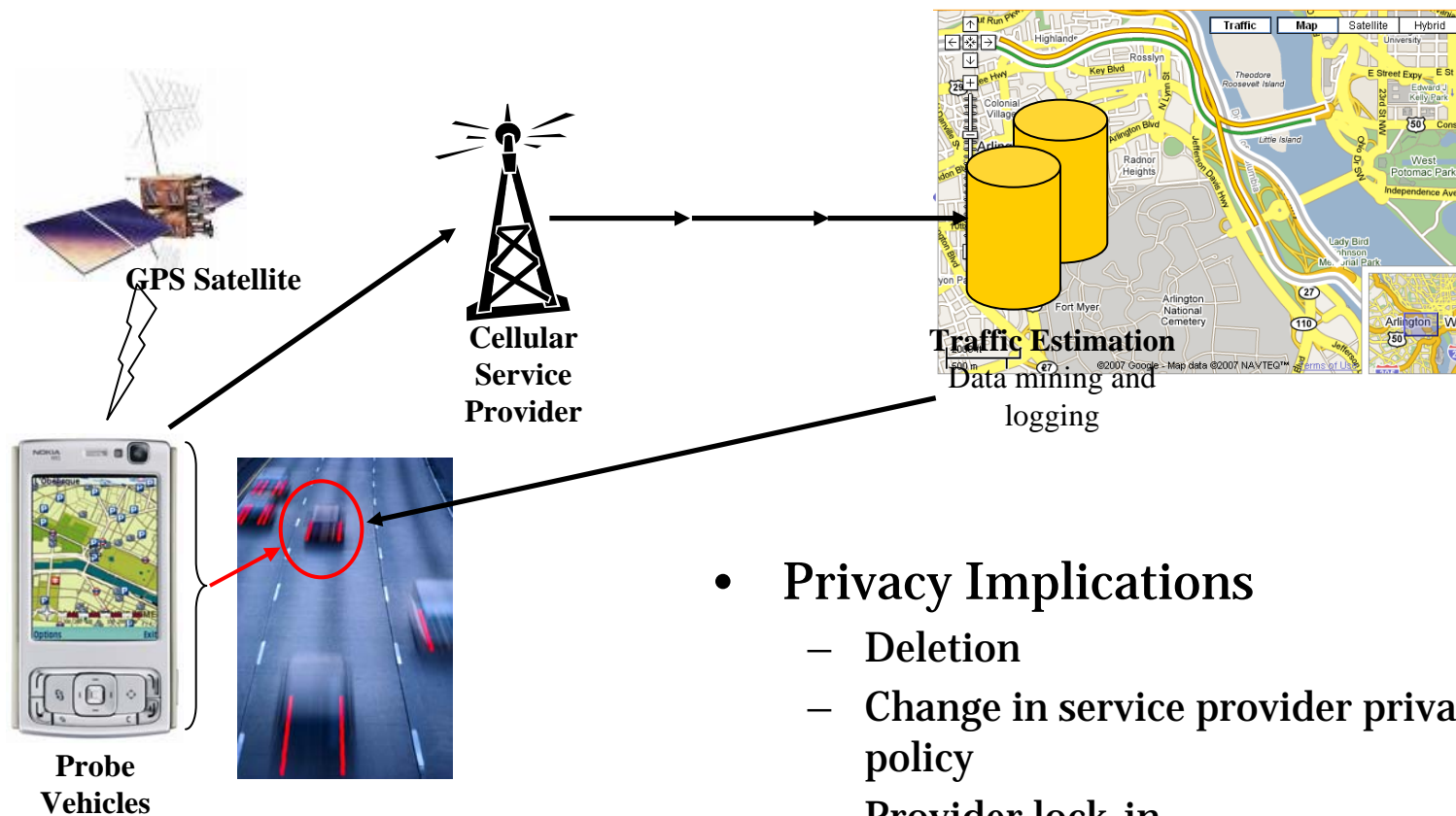




Privacy Implications of Mobile Cloud Computing

Marco Gruteser
WINLAB

Trend Towards Data Storage in Cloud: Privacy?



- **Privacy Implications**

- Deletion
- Change in service provider privacy policy
- Provider lock-in
- Subpoenas

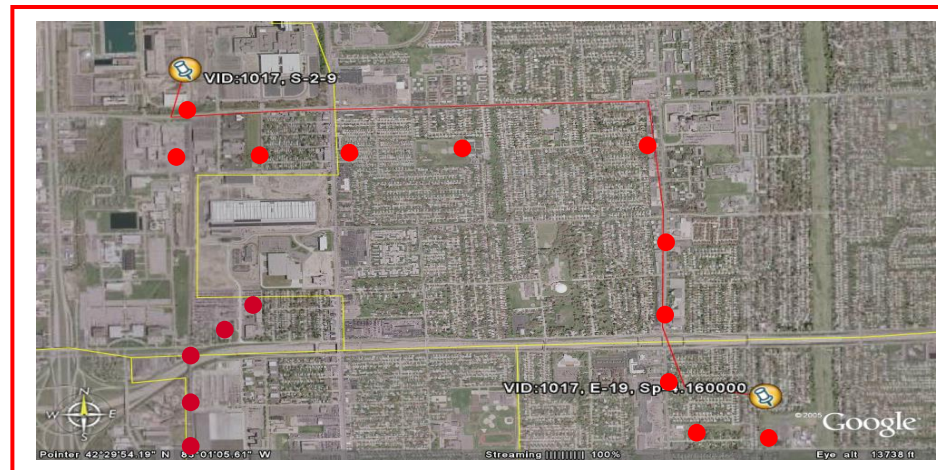
Recent Controversy about Human Mobility Article Demonstrates Location Privacy Sensitivities



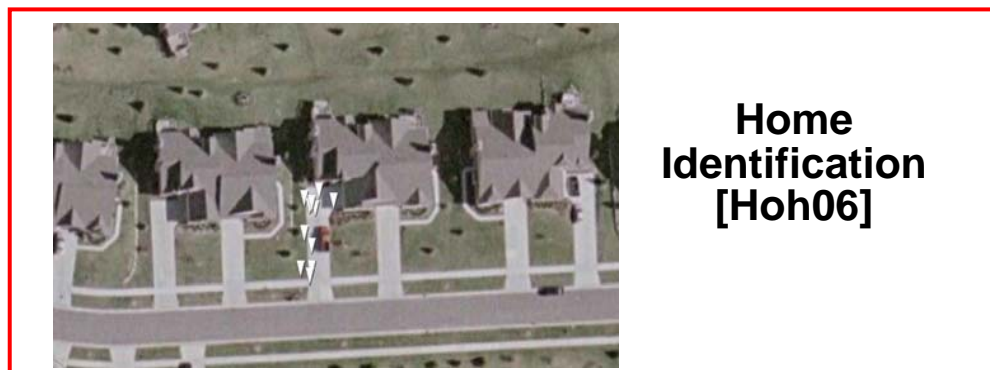
- Analyzed human mobility patterns from cell phone hand off data
 - 100,000 users over 6 months
- Coarse data
 - Cell tower location recorded for each call / message
 - Average towers covered 3 km²

Inferences from Detailed Location Traces

- Embarrassing or inaccurate inferences
 - Medical clinic visits
 - Nightclub visits
 - ...
- Fraud & Theft
 - Burglaries
 - Credit Cards ?
- VIP business meetings
- Physical Risk
 - Stalkers
- Minor traffic infractions



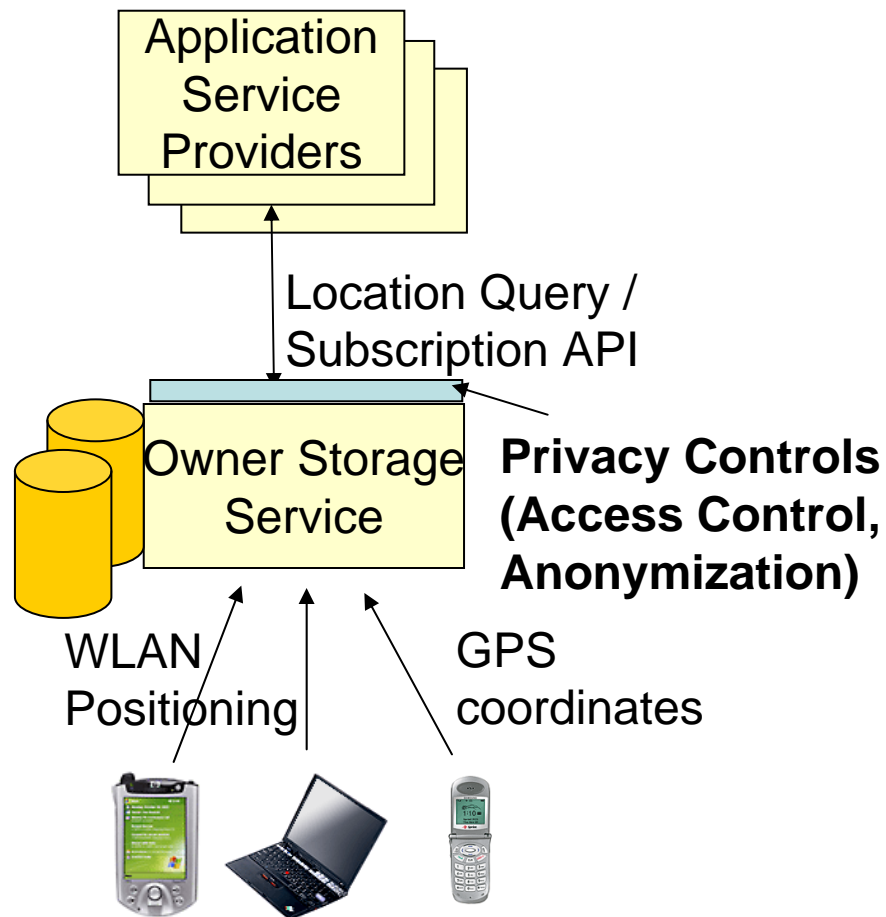
Tracking algorithms recover individual trace [Hoh05] (Median trip time only 15min)



Home Identification [Hoh06]

Location may be precise enough to identify home

A Privacy Solution: Owner-controlled Storage Server



- Separate data storage from processing
 - Storage service controlled by data owner (data subject)
- Location governed by legal terms
 - Home
 - ISPs outside country?
- Open standards to allow moving services and data between different service providers